



QIMR
Berghofer

2024 DONOR IMPACT REPORT



DIRECTOR'S MESSAGE



PROFESSOR FABIENNE MACKAY

As Director and CEO of QIMR Berghofer, I am delighted to share the impact of our remarkable donors, whose support has made our ground-breaking medical research possible in 2024.

For nearly eight decades, our world-renowned institute has delivered impactful medical research that genuinely saves lives. With your support, our scientists continue to build on this outstanding legacy, producing exciting research achievements that help us to understand diseases, develop new treatments and improve patient care.

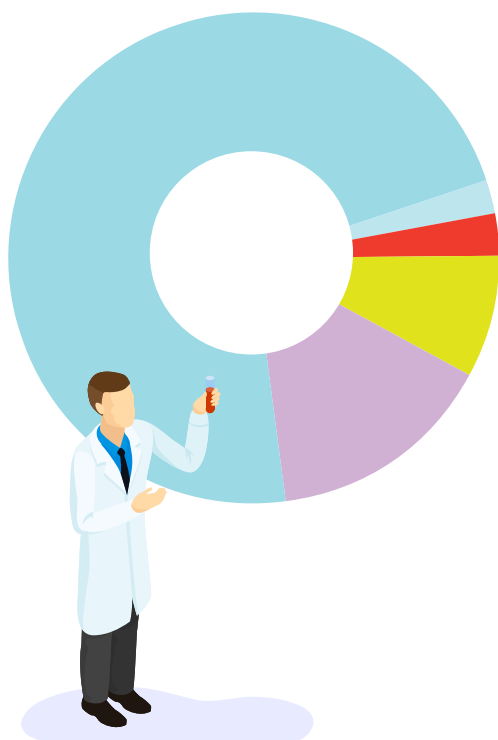
Your generosity allows us to accelerate research discoveries into the clinic, invest in cutting-edge technology, attract top talent, and bridge critical funding gaps.

By investing in QIMR Berghofer, you are investing in a healthier future for all Queenslanders. On behalf of everyone at the institute we thank you for your commitment to advancing medical science.

BY THE NUMBERS FY 23/24

\$19,218,434.49

Total raised in FY 23/24



GREATEST NEED

72%

Donations made to the area of greatest need help to fund research that may have missed out on government grants, scholarships for students, and seed funding for new projects.

CANCER

15%

The Cancer program supports a wide range of research projects including blood cancer, brain cancer, women's cancers, and more.

INFECTION & INFLAMMATION

8%

The Infection and Inflammation program supports research from heart disease to long COVID, malaria, and asthma, just to name a few.

BRAIN & MENTAL HEALTH

3%

The Brain and Mental Health program, supports research into dementia, Parkinson's disease and mental health disorders.

POPULATION HEALTH

2%

The Population Health program is dedicated to health and well-being for all Australians and our regional neighbours. Some research areas in this program include glaucoma, melanoma, endometriosis, and diseases of poverty.

THANK YOU

FOR SUPPORTING OUR SPECIAL RESEARCH PROJECTS



Professor Stuart MacGregor with his mother, Liz, who lives with glaucoma. Professor MacGregor has developed a simple saliva test that predicts your risk of developing the condition.

SHINING THE LIGHT ON GLAUCOMA

Thanks to the generosity of people like you, over \$57,000 was raised to advance glaucoma research and improve early detection.

Professor Stuart MacGregor has spent decades studying glaucoma, Australia's leading cause of irreversible blindness. While there is no cure, early detection and treatment can save your sight.

Professor MacGregor and his team have identified more than 300 genes linked with glaucoma risk. Their meticulous work has led to the development of a simple saliva-based genetic test that predicts your risk of developing glaucoma.

By supporting this important research, you are helping make this test available to everyone – potentially saving generations of sight! Thank you.

OUTSMART CANCER

Your support has already made an incredible impact on the future of Dr Siok Tey's cancer research.

Dr Tey and her team have developed a new therapy that can detect certain blood cancers and destroy them. It's called CAR T cell therapy, and this advancement has already had remarkable success in certain blood cancers, with the team now working to expand it to other types of cancer.

"In the patients who respond to the treatment, the recovery is miraculous. We want this result for everyone," Dr Tey said.

With your support, \$540,000 was raised to support this revolutionary CAR T research, meaning this life-saving work can continue for another two years.

Thank you for providing hope to patients who have run out of treatment options.



IT TAKES A COMMUNITY

We celebrate every act, event, endeavour and contribution from our growing and committed community fundraisers, who join us to create a healthier future together.

Our dedicated community fundraisers have raised over \$210,000 by turning passions into opportunity...selling pottery, playing Barefoot Bowls, hosting Gala Balls, sausage sizzles and raffles, putting talents on display in open mic nights, and running, running, running!

THE ULTRA ACT OF LOVE – A HEARTFELT TRIBUTE

Chris Beath and his best mate raised over \$50,000 to support cancer research at QIMR Berghofer, in memory of his beloved mother, Karen

Chris and his mate, Sean, set out to conquer a 100km ultra marathon from the Gold Coast to Redlands in honour of his mother, Karen. It was a family affair, with his younger brother following along by bike.

Karen, affectionately known as “Kaz”, demonstrated remarkable strength and courage during her three-year battle with various forms of cancer. Her legacy continues to inspire her family and friends, ensuring her memory will live on.

The Beath family’s unwavering commitment to a healthier future is inspiring. They raised \$50,000 to support twelve researchers at QIMR Berghofer who are investigating various types of cancer.



Mum was a remarkable woman who fought cancer with grace and dignity, and we ran to celebrate her life, her impact and her unwavering spirit.

– Chris Beath

Karen with her sons Nat (left) and Chris (right)



Our community fundraisers raised over \$210,000. Thank you!

PLANTING A SEED: GIFTS IN WILLS GROW HOPE FOR THE FUTURE

‘The one who plants trees, knowing they will never sit in their shade, has at least started to understand the meaning of life’.

-Rabindranath Tagore.

We thank the families and loved ones of those who have generously left a gift in their Will. These visionary donors are investing in medical research.

Last financial year, bequest donations contributed more than \$11 million, helping advance bold and innovative research programs at the Institute.

Deciding to leave a gift in your Will is a deeply personal choice. By including QIMR Berghofer, you provide a lasting gift that benefits future generations through vital medical research.

Every gift, regardless of size, makes a meaningful impact by supporting our scientists in developing treatments and cures for our most urgent health challenges. We are grateful for your contribution.

THE BANCROFT SOCIETY

Those who decide to leave a gift in Will to support QIMR Berghofer are invited to join the Bancroft Society, named in honour of the Bancroft Family, pioneers of medical research in Queensland.

Members of the Bancroft Society are celebrated at our annual high tea, given priority access to our research facilities and scientists, and invited to other events throughout the year.

Our dedicated Bancroft Society wall features plaques engraved with the names of donors, serving as a poignant reminder of their legacy of generosity.



**Over \$11 million
was donated
through Gifts
in Wills.**

THE PERSONAL REASONS BEHIND CORPORATE SU

AIRTRAIN – SMALL CHANGE MAKING A BIG DIFFERENCE

Brisbane Airtrain supports QIMR Berghofer's dedicated researchers working towards a cure for brain cancer.

Airtrain CEO, Chris Basche, shares his personal journey with brain cancer to give hope to others.

Since 2023, Airtrain has encouraged its 1.5 million passengers to make small donations when purchasing tickets. Through cash collection tins, tap and pay points and international currency collections, small change is making a big difference. Just over \$30,000 has already been raised for brain cancer research at QIMR Berghofer.



I am profoundly grateful for the exceptional medical team supporting me; their expertise has made an enormous difference in shaping my outlook.

**– Chris Basche
Airtrain CEO**



MERCER SHAPING A HEALTHIER FUTURE FOR ALL

Mercer CEO, Wealth, Pacific, Cathy Hales toured Associate Professor Michelle Wykes' Molecular Immunology laboratory to learn more about the advancements in treatments for aggressive breast and bowel cancers. We are grateful for Mercer's continued support and contribution to QIMR Berghofer's research.

QIMR Berghofer Chief Financial Officer, Stewart Brown, Mercer CEO, Wealth, Pacific, Cathy Hales, QIMR Berghofer Investment Committee Chair, Celeste Neander, and Group Leader Molecular Immunology and Fovero Therapeutics founder, Associate Professor Michelle Wykes.

PPORT

CULTIVATING THE NEXT GENERATION OF WORLD LEADING SCIENTISTS

BioTools Directors, Hardi and Catherine Schwarting, believe education is key to future discoveries.

BioTools, an innovative Queensland-based company and long-time supporter of QIMR Berghofer, has been honoured with the 2023 Clive Berghofer Humanitarian Award.

The company provides high-quality solutions to streamline laboratory workflows. Through their generous contributions of more than \$235,000, BioTools has created mentoring opportunities for QIMR Berghofer student researchers and facilitated engagement with industry leaders.



We are incredibly grateful that BioTools shares our vision of giving students every opportunity to succeed in their careers.

**– Professor Glen Boyle
QIMR Berghofer**



Hardi and Catherine (centre) with QIMR Berghofer students



**Biniris Managing Director
Craig King**

BINIRIS, IMPACTING MEDICAL RESEARCH FOR OVER 23 YEARS

For two decades, Biniris has contributed to QIMR Berghofer's Mosquito Control Laboratory, which focuses on mosquito surveillance and management research.

WORKPLACE GIVING

QIMR Berghofer fosters a culture of philanthropy and social responsibility through its Workplace Giving Program. In the last financial year, our people donated just over \$9,000 towards important research at QIMR Berghofer.



**\$140,730.78 was raised
by corporate donors.**

TRANSFORMATIONAL GIFTS

Major gifts continue to propel innovative and impactful research at QIMR Berghofer. We thank all the passionate individuals, families, Trusts, and Foundations who choose to make a difference through our research.

Professor Sudha Rao's research into inflammatory lung diseases, including Long-COVID, Chronic Obstructive Pulmonary Disease (COPD) and cystic fibrosis, received a generous donation from Stephen Bradshaw, founder of Simpro Software and VentureOn Partners, and his wife, Jane.

Stephen has personally endured the challenges of Long-COVID, and is an advocate for advancing treatment options for this poorly understood condition. The couple's contribution also honours Stephen's late mother, who lived with COPD.

"My journey with Long-COVID has been a profound experience that has reshaped my perspective on life. I am compelled to contribute to the advancement of research, not just for myself but for the countless individuals worldwide facing similar health challenges," Stephen says.

The Bradshaws, with their generous \$100,000 donation will help progress the



“

I cannot stress enough that without the initial funding, we would not have achieved what we have.

**– Professor Sudha Rao
QIMR BERGHOFER**

development of a promising peptide-based drug, NACE2i, which is moving toward human clinical trials.

This treatment holds hope for people with Long-COVID, COPD, cystic fibrosis and other lung diseases.

"We now have exciting data in pre-clinical models, which shows that the peptide-drug, NACE2i reverses lung damage. It also restores the air sacs that are damaged in COPD and other severe lung conditions. This discovery is a world first and could revolutionise patient treatment," said Professor Sudha Rao.

This breakthrough holds potential for Stephen and millions of others worldwide, and Professor Rao's team is deeply grateful for the Bradshaws' support.



Top: Professor Sudha Rao (far right) with the Gene Regulation & Translational Medicine Group



Stephen
and Jane
Bradshaw

YOUR IMPACT

Being part of the QIMR Berghofer Council and leading the Philanthropy Committee is a privilege. I take great pride in seeing the collective power of philanthropy at work, supporting innovative research that offers hope and health solutions to communities.

As Chair of the Philanthropy Committee, I am proud of QIMR Berghofer's commitment to philanthropic governance and stewardship.

Every donation helps advance scientific discovery and accelerate treatments at QIMR Berghofer, leading the way to significant innovation in health – nationally and globally.

Margo MacGillivray

Chair,
QIMR Berghofer
Philanthropy Committee



Philanthropy is derived from the ancient Greek words that mean 'love of humanity'

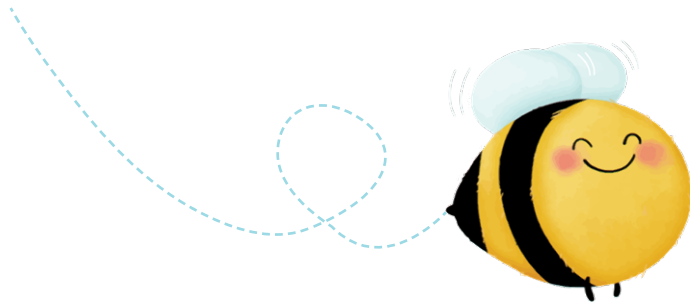
**– Margo MacGillivray
QIMR BERGHOFFER
PHILANTHROPY
COMMITTEE**



**More than \$5.9 million was
contributed by Major Gifts, Trusts
and Foundation donors.**

YOU ARE OUR REASO

BEE-



THANK YOU FOR BEING SO SWEET!

Thankuary is a special opportunity to recognise our community of donors, fundraisers and supporters who make our research possible.

This year's celebrations included a Government House reception, supporter visits and hundreds of thank-you notes to our donors from researchers.

Long-term friend of the institute, 102-year-old Mac Lever, is interested in our work on exercise and good health.

Mac says her secret to her good health and happiness is daily exercise and word search puzzles.



QIMR researchers are doing fantastic work for everybody's health, particularly for those who have rheumatoid arthritis and other non-life threatening conditions which people suffer through and which diminish their quality of life.

**- Mac Lever
QIMR Berghofer supporter**



THE RESULTS ARE IN...

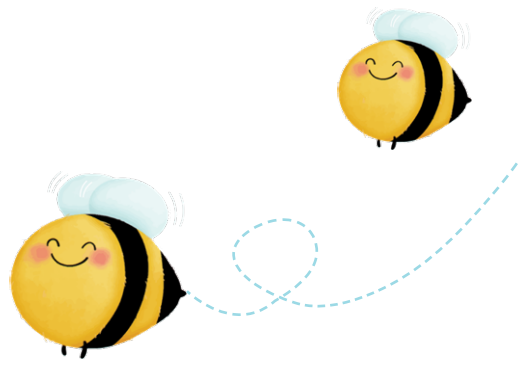
THANK YOU FOR LETTING US KNOW WHAT MATTERS TO YOU

If you subscribe to LifeLab magazine, you may recall a survey we conducted to learn more about our supporters and the research that matters to you.

More than 300 of you responded, telling us that our diverse range of disease research, and our emphasis on basic and applied research in solving health challenges are important to you.

Thank you!

ON FOR -ING!



CELEBRATING OUR DONORS AT GOVERNMENT HOUSE

Her Excellency the Honourable Dr Jeannette Young AC PSM, Governor of Queensland, has close ties with QIMR Berghofer, serving as Patron and former Council member.

As part of Thankuary, Her Excellency and Professor Graeme Nimmo RFD welcomed donors, industry partners and researchers to Government House to acknowledge and celebrate their contribution.



I would particularly like to acknowledge friends who have supported the work of our researchers for more than 30 years. What an extraordinary legacy and contribution to improving health outcomes in Queensland and around the world.

**– Professor Fabienne Mackay
QIMR Berghofer supporter**



NEXT YEAR IS OUR 80TH BIRTHDAY!

Next year we celebrate our 80th anniversary. Watch for invitations to upcoming events and opportunities to tour the labs and meet our researchers. We would be delighted for you to join us.

**For more information,
please contact us at:**

Phone: 1800 993 000

Email: supportus@qimrberghofer.edu.au

